

# ICS2 - Release 3

Implementation Guide

D1.6

February 2026

## Document change log

Concept 1	16-10-2023	Marcel Coumans & Marcel Schroër	Draft version
D1.0	9-11-2023	Marcel Coumans & Marcel Schroër	<ul style="list-style-type: none"> <li>- Itinerary changed from Optional to Mandatory with at least 2 entries</li> <li>- Re-entry indicator added</li> <li>- Estimated departure date added</li> </ul>
D1.1	4-4-2024	Marcel Coumans & Marcel Schroër	Interface options 3A and 4A corrected to TSR (was TSD)
D1.2	16-04-2024	Marcel Coumans & Marcel Schroër	Interface option 2C: added IFTMCS 6.0.2 (704) so carriers can send TSD and TSR with version 6.0.2
D1.3	22-05-2024	Marcel Coumans & Marcel Schroër	Newer version of IFTMCS 5.8.6 and 6.0.5 for reporting PoUS MRN in RFF+ACE with qualifier 825 (T2L)
D1.4	27-08-2024	Marcel Coumans & Marcel Schroër	<p>Newer version of IFTMCS 6.0.5:</p> <ul style="list-style-type: none"> <li>- Updated name and address requirements for Consignor/ Consignee, Notify Party, Buyer and Seller.</li> <li>- Added explicit filing type in FTX segment. (F10, F11, F12, F13, TSD, TSR). Also explained in 'Interface options'</li> <li>- Added updated IFTMCS example messages</li> </ul>
D1.5	23-09-2024	Marcel Coumans & Marcel Schroër	<ul style="list-style-type: none"> <li>- Added test scenario's and example message (JSON and IFTMCS EDIFACT)</li> <li>- New version of IFTMCS 5.8.7 and 6.0.5; added filing type 'NON' to handle IFTMCS messages that do not trigger an ENS and/or TSD/TSR (for instance in case of Union goods in combination with a Regular Shipping Service licence).</li> </ul>
D1.6	16-02-2026	Marcel Coumans & Marcel Schroër	Because of the change in policy by the Dutch Customs Authority to discontinue the TSR and to allow the TSD with master data only, we have implemented a new version of the IFTMCS 5.8.9 and removed the TSR option. See the changelog and example of IFTMCS 5.8.9

## Interface options

Depending on the filing type, the type of Bill of Lading (B/L) and the Portbase service you are using, there are the following interface options available.

### 1. Single filing (Straight B/L)

	ENS	TS	Interface options
1A	Single filing	TSD	<ul style="list-style-type: none"> <li>• 1x API POST Send a straight bill of lading for single filing (IE3F10) or</li> <li>• 1x IFTMCS 6.0.5 (712) + FTX+ACD+F10'</li> </ul>
1B	-	TSD	<ul style="list-style-type: none"> <li>• 1x API POST Send an import declaration for usage in a temporary storage declaration to Dutch Customs (TSD) or</li> <li>• 1x IFTMCS 6.0.5 (712) + FTX+ACD+TSD'</li> <li>• 1x IFTMCS 5.8.9 (705) + FTX+ACD+TSD'</li> </ul>

### 2. Single filing (Master B/L + House B/L)

	ENS	TS	Interface options
2A	Single filing	TSD	<ul style="list-style-type: none"> <li>• 1x API POST Send a master bill of lading for single filing (IE3F11) or</li> <li>• 1x IFTMCS 6.0.5 (704) + FTX+ACD+F11'</li> <li>• 1 or more IFTMCS 6.0.5 (714) + FTX+ACD+F11'</li> </ul>
2B	-	TSD (master + house)	<ul style="list-style-type: none"> <li>• 1x API POST Send an import declaration for usage in a temporary storage declaration to Dutch Customs (TSD) or</li> </ul>
2C		TSD (master only)	<ul style="list-style-type: none"> <li>• 1x IFTMCS 6.0.5 (712) + FTX+ACD+TSD'</li> <li>• 1x IFTMCS 5.8.9 (704) + FTX+ACD+TSD'</li> </ul>

### 3. Multiple filing (Straight B/L only)

	ENS	TS	Interface options
3A	Multiple filing	TSD	<ul style="list-style-type: none"> <li>• 1x API POST Send a straight bill of lading for multiple filing (IE3F13) or</li> <li>• 1x IFTMCS 6.0.5 (712) + FTX+ACD+F13'</li> </ul>
3B		TSD	<ul style="list-style-type: none"> <li>• 1x API POST Send an import declaration for usage in a temporary storage declaration to Dutch Customs (TSD)</li> <li>• 1x IFTMCS 6.0.5 (712) + FTX+ACD+TSD'</li> <li>• 1x IFTMCS 5.8.9 (705) + FTX+ACD+TSD'</li> </ul>

### 4. Multiple filing (Master B/L only)

	ENS	TS	Interface options
4A	Multiple filing	TSD	<ul style="list-style-type: none"> <li>• 1x API POST Send a master bill of lading for multiple filing (IE3F12) or</li> <li>• 1x IFTMCS 6.0.5 (704) + FTX+ACD+F12'</li> </ul>
4B		TSD	<ul style="list-style-type: none"> <li>• 1x API POST Send an import declaration for usage in a temporary storage declaration to Dutch Customs (TSD)</li> <li>• 1x IFTMCS 6.0.5 (712) + FTX+ACD+TSD'</li> <li>• 1x IFTMCS 5.8.9 (704) + FTX+ACD+TSD'</li> </ul>

## API

### Methods

You can find the methods on the API endpoints using the following URL:

<https://portvisit.pcs.portbase.com/api-documentation/index.html#tag/Consignments-API>

### Tracking API

You can listen in real-time to all consignment updates. In order to achieve real-time updates, the API uses long polling. When you send the API request to /listen, you will immediately receive any vessel visit update that has happened since your previous call, up to the number configured with the maxSize attribute. If no updates have happened since your previous call, the API request will not return immediately. The request will return when a new update has become available or when the maxTimeout is reached. After the API response has returned, and the client has finished processing the updates, you should call the /updatePosition API. Then you will be able to call /listen again for the next update batch. With this setup, you will receive updates as fast as you can process them.

Default call order:

- Call /listen
- Call /updatePosition (even if the /listen response was empty)
- Keep repeating 1 and 2
- When done, call /disconnectClient

More details on how to correctly use this endpoint can be found in the descriptions of the request and response models.

<https://portvisit.pcs.portbase.com/api-documentation/index.html#tag/Tracking-API>

## Changelog IFTMCS 6.0.5

All the changes required in the IFTMCS to meet the ICS2 requirements are listed below. These changes have been implemented in the new version 6.0.5.

### Message header (CHANGED)

#### UNH (Required)

The version is changed from PBS20 to PBS30.

#### Example

UNH+3747700003+IFTMCS:D:00B:UN:PBS30'

### Indication of B/L type (CHANGED)

#### BGM (Required)

The qualifier '707 - Bill of lading copy' will be replaced by:

- 704 - Master bill of lading
- 712 - Non-negotiable maritime transport document (Straight bill of lading)
- 714 - House bill of lading

#### Example

BGM+704+4112814530NL IC2023101106313200+9' (Master)

BGM+714+4112814530NL IC2023101106313200+9' (House)

### Re-entry indicator (NEW)

#### FTX (Conditional)

In case of a split consignment it must refer to the original consignment. The master reference number of the original consignment must be used in this case.

#### Qualifier

- REI – Re-entry Indicator

#### Reference to XPath in Fxx as published at [circabc.europa.eu](http://circabc.europa.eu)

- 704: CIS/reEntryIndicator
- 712: not applicable
- 714: CIS/reEntryIndicator

#### Example

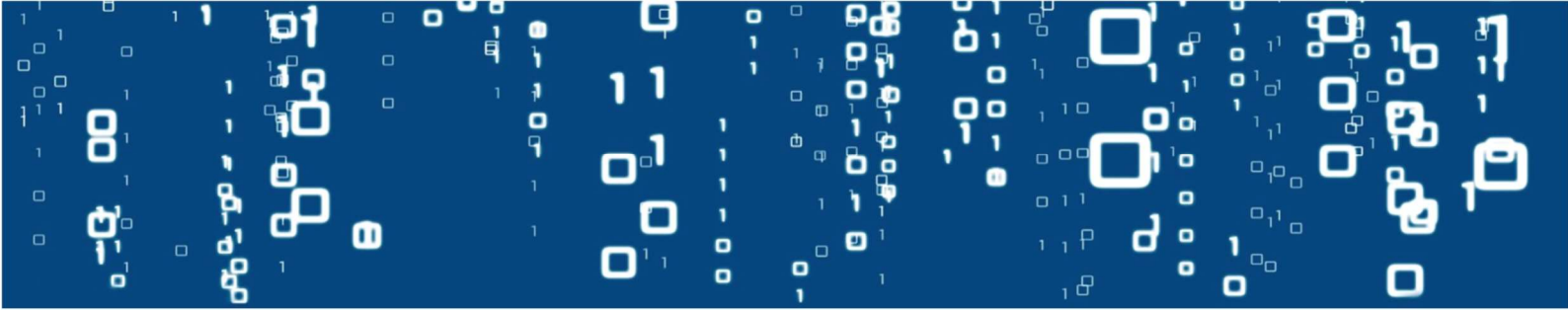
FTX+REI'

### Filing type (NEW)

#### FTX (Mandatory)

When 'F10' is used, an F10 will be sent to the shared trader interface (EU) and a TSD will be sent to the Dutch customs.

When 'F11' is used, an F11 will be sent to the shared trader interface (EU) and a TSD will be sent to the Dutch customs.



When 'F12' is used, an F12 will be sent to the shared trader interface (EU) and a TSD will be sent to the Dutch customs (only with master data).

When 'F13' is used, an F13 will be sent to the shared trader interface (EU) and a TSD will be sent to the Dutch customs (only with master data).

When 'TSD' is used, only a TSD will be sent to the Dutch customs.

When 'None' is used, no declaration will be sent (for instance in case of Union goods in combination with a Regular Shipping Service licence).

#### **Qualifier**

- ACD – Reason for request

#### **Example**

FTX+ACD+F11'

#### **Count (NEW)**

##### **CNT (Conditional)**

A control number that indicates how many House B/Ls will follow. This is needed to ensure that Portbase can consolidate the master B/L and house B/L(s) into 1 ENS and/or TSD. This segment is only needed in case of a single filing Master B/L. In case of multiple filing, this segment must not be used.

#### **Qualifier**

- 10 - total number of house consignments

#### **Example**

CNT+10:2'

#### **Itinerary (NEW)**

##### **LOC <Group 1> (Mandatory)**

Identification in a chronological order of the countries through which the means of transport is routed between the country of original departure and final destination. This means that the list should include at least the country of the original departure and final destination.

#### **Qualifier**

- 25 - Country

#### **Reference to XPath in Fxx as published at [circabc.europa.eu](http://circabc.europa.eu)**

- 704: CIS/BorderTransportMeans/Itinerary
- 712: CIS/BorderTransportMeans/Itinerary
- 714: CIS/Consignment/HouseConsignment/Itinerary

#### **Example**

LOC+25+US'

## Payment method for transport charges (CHANGED)

### TOD <Group 2> (Required)

The list of values is changed. Possible values are:

- XA - Payment in cash
- XB - Payment by credit card
- XC - Payment by cheque
- XD - Other
- XH - Electronic funds transfer
- XY - Account holder with carrier
- XZ - Not pre-paid

### Reference to XPath in Fxx as published at [circabc.europa.eu](http://circabc.europa.eu)

- 704: CIS/Consignment/Freight/paymentMethod
- 712: CIS/Consignment/HouseConsignment/Freight/paymentMethod
- 714: CIS/Consignment/HouseConsignment/Freight/paymentMethod

#### *Example*

TOD++XH'

## Transport contract document (CHANGED)

### RFF <Group 3> (Required)

Reference to transport contract document

- 704: 1x RFF <Group 3> with qualifier 'MB - Master bill of lading number'
- 712: 1x RFF <Group 3> with qualifier 'MB - Master bill of lading number'  
1x RFF <Group 3> with qualifier 'BH - House bill of lading number'
- 714: 1x RFF <Group 3> with qualifier 'AEX - Straight bill of lading number'

### Reference to XPath in Fxx as published at [circabc.europa.eu](http://circabc.europa.eu)

- 704: CIS/Consignment/TransportContractDocument
- 712: CIS/Consignment/HouseConsignment/TransportContractDocument
- 714: CIS/Consignment/TransportContractDocument

#### *Example*

RFF+MB:OOLU4112814999'

RFF+BH:OOBL4112814888'

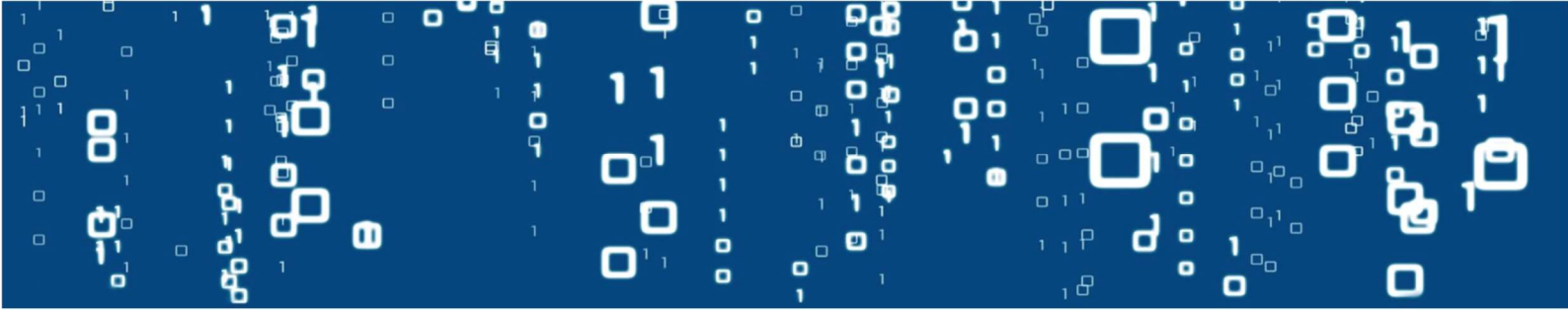
## Trader assigned reference (NEW)

### RFF <Group 3> (Optional)

Reference to trader assigned reference to the shipment.

This entry concerns the unique commercial reference number assigned by the person concerned to the consignment in question. It may take the form of WCO (ISO 15459) codes or equivalent. It provides access to underlying commercial data of interest to customs.

This entry may be used for the indication of the transaction identifier (such as the reference to the purchase contract), if the goods are declared for release for free circulation under the special scheme



for distance sales of goods imported from third countries and territories set out in Title XII Chapter 6 Section 4 of Directive 2006/112/EC

**Qualifier**

- UCN - Unique consignment reference number

**Reference to XPath in Fxx as published at [circabc.europa.eu](http://circabc.europa.eu)**

- 704: CIS/Consignment/UCR/traderAssignedReference
- 712: CIS/Consignment/HouseConsignment/UCR/traderAssignedReference
- 714: CIS/Consignment/HouseConsignment/UCR/traderAssignedReference

**Example**

RFF+UCN:REF12345678'

**Split consignment (NEW)**

**RFF <Group 3> (Conditional)**

In case of a split consignment it must refer to the original consignment. The master reference number of the original consignment must be used in this case.

**Qualifier**

- SCI - Split consignment

**Reference to XPath in Fxx as published at [circabc.europa.eu](http://circabc.europa.eu)**

- 704: CIS/SplitConsignment/previousMasterReferenceNumber
- 712: not applicable
- 714: CIS/SplitConsignment/previousMasterReferenceNumber

**Example**

RFF+SCI:23DE48515990359999'

**Vessel Identification (CHANGED)**

**TDT <Group 8> (Required)**

The transport identification (IMO number) was optional, but is now required.

- 704: Required
- 712: not used
- 714: Required

**Reference to XPath in Fxx as published at [circabc.europa.eu](http://circabc.europa.eu)**

- 704: CIS/BorderTransportMeans/identification
- 712: not applicable
- 714: CIS/BorderTransportMeans/identification

**Example**

TDT+20+LL6 1260-004+1++OOLU+++9893993:::EVER ATOP:SG's

## Estimated departure date (NEW)

### DTM <Group 8> <Group 9> (Conditional)

When, from the place of loading, the actual departure time has not been filled, the estimated departure time should be reported.

#### Qualifier

- 133 – Departure date/time, estimated

#### Reference to XPath in Fxx as published at [circabc.europa.eu](http://circabc.europa.eu)

- 704: CIS/BorderTransportMeans/estimatedDepartureDateTime
- 712: not applicable
- 714: CIS/BorderTransportMeans/estimatedDepartureDateTime

#### Example

DTM+133:20231017:102'

## Passive means of transport (NEW)

### TDT <Group 8> (Optional)

The type and identification of the passive means of transport. In the case of combined transportation, enter the identity of the passive means of transport that is being transported by the active means of transport. For example, in the case of a lorry on a sea-going vessel, the passive means of transport is the lorry. In that case the vehicle registration number must be reported.

#### Qualifier

- PBT - Passive border transport means

#### Reference to XPath in Fxx as published at [circabc.europa.eu](http://circabc.europa.eu)

- 704: not applicable
- 712: CIS/Consignment/HouseConsignment/PassiveTransportMeans
- 714: CIS/Consignment/HouseConsignment/PassiveTransportMeans

#### Example

TDT+PBT+++310+++30:::R047KR:NL'

## Buyer (NEW)

### NAD <Group 11> (Conditional)

The buyer is the last known entity to whom the goods are sold or agreed to be sold. If the goods are to be imported otherwise than in pursuance of a purchase, the details of the owner of the goods shall be provided.

- 704: not used
- 712: Conditional. Required when Place of delivery is within EU
- 714: Conditional. Required when Place of delivery is within EU

#### Qualifier

- BY - Buyer

#### Reference to XPath in Fxx as published at [circabc.europa.eu](http://circabc.europa.eu)

- 704: not applicable
- 712: CIS/Consignment/HouseConsignment/GoodsShipment/Buyer
- 714: CIS/Consignment/HouseConsignment/GoodsShipment/Buyer

#### **Example**

NAD+BY+++OOCL LOGISTICS (EUROPE) LTD - ROTTE+ROTTERDAM BRANCH WEENA ZUID 134 - 6+ROTTERDAM++3012 NC+NL'

#### Seller (NEW)

##### **NAD <Group 11> (Conditional)**

The seller is the last known entity by whom the goods are sold or agreed to be sold to the buyer. If the goods are to be imported otherwise than in pursuance of a purchase, the details of the owner of the goods shall be provided.

- 704: not used
- 712: Conditional. Required when Place of delivery is within EU
- 714: Conditional. Required when Place of delivery is within EU

#### **Qualifier**

- SE - Seller

#### Reference to XPath in Fxx as published at [circabc.europa.eu](http://circabc.europa.eu)

- 704: not applicable
- 712: CIS/Consignment/HouseConsignment/GoodsShipment/Buyer
- 714: CIS/Consignment/HouseConsignment/GoodsShipment/Buyer

#### **Example**

NAD+SE+++OOCL LOGISTICS (EUROPE) LTD - ROTTE+ROTTERDAM BRANCH WEENA ZUID 134 - 6+ROTTERDAM++3012 NC+NL'

#### AEO Mutual Recognition Parties (NEW)

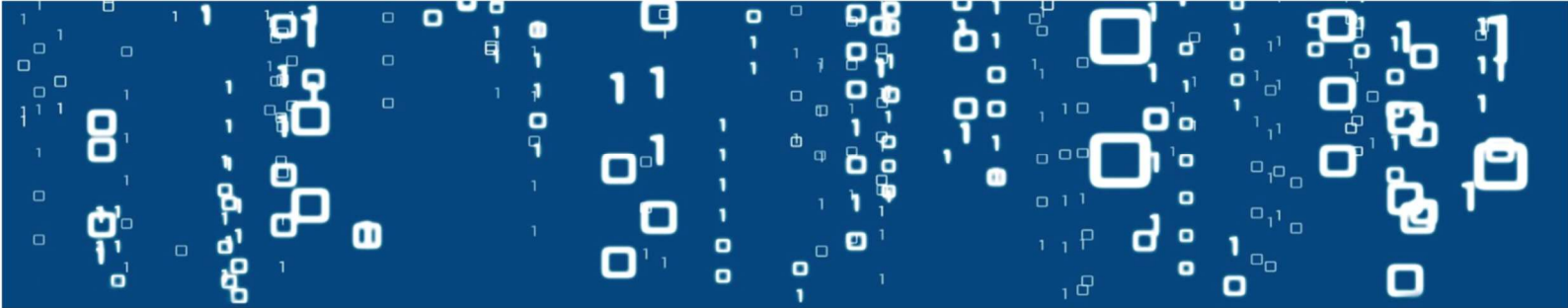
##### **NAD <Group 11> (Optional)**

Additional supply chain actors can be indicated here in order to demonstrate that the entire supply chain was covered by the economic operators holders of the AEO status. If this data class is used Role and Identification number shall be provided, else this data element is optional.

- 704: used
- 712: used
- 714: used

#### **Qualifier**

- CS - Consolidator
- FW - Freight Forwarder
- MF - Manufacturer of Goods



#### **Reference to XPath in Fxx as published at [circabc.europa.eu](http://circabc.europa.eu)**

- 704: CIS/Consignment/AEOMutualRecognitionParty
- 712: CIS/Consignment/HouseConsignment/AEOMutualRecognitionParty
- 714: CIS/Consignment/HouseConsignment/AEOMutualRecognitionParty

#### **Example**

NAD+CS+GB987654312000'

#### **Supplementary Declarant (NEW)**

##### **NAD <Group 11> (Conditional)**

The EORI of the party who submits the filing of the house bill of lading(s).

- 704: Conditional. Required in case of multiple filing
- 712: not used
- 714: Conditional. Required in case of multiple filing

#### **Qualifier**

- DT - Declarant

#### **Reference to XPath in Fxx as published at [circabc.europa.eu](http://circabc.europa.eu)**

- 704: CIS/Consignment/SupplementaryDeclarant
- 712: not applicable
- 714: CIS/Consignment/SupplementaryDeclarant

#### **Example**

NAD+DT+GB987654232888'

#### **Commodity HS Code (CHANGED)**

##### **PIA <Group 18> (Required)**

The Harmonized System sub-heading code is required. The length of the HS code should now be at least 6 characters instead of 4. Was optional and is now required.

- 704: Required
- 712: Required
- 714: Required

#### **Qualifier**

- 5 - Product Identification

#### **Reference to XPath in Fxx as published at [circabc.europa.eu](http://circabc.europa.eu)**

- 704: CIS/Consignment/ConsignmentItem/Commodity/Commodity code/Harmonized System sub-heading code
- 712: CIS/Consignment/HouseConsignment/ConsignmentItem/Commodity/Commodity code/Harmonized System sub-heading code
- 714: CIS/Consignment/HouseConsignment/ConsignmentItem/Commodity/Commodity code/Harmonized System sub-heading code

### **Example**

PIA+5+392323:HS'

## **Commodity CusCode (NEW)**

### **PIA <Group 18> (Optional)**

The Customs Union and Statistics (CUS) number is the identifier assigned within the European Customs Inventory of Chemical Substances (ECICS) to mainly chemical substances and preparations. The declarant may provide this code on a voluntary basis where no measure laid down in Union legislation as published in TARIC exists for the goods concerned, i.e. where providing this code would represent a lesser burden than a full textual description of the product.

Where the goods concerned are subject to a measure laid down in Union legislation as published in TARIC in relation with a CUS code, the code CUS shall be provided.

### **Qualifier**

- 12 - Alternate Product Identification

### **Reference to XPath in Fxx as published at [circabc.europa.eu](http://circabc.europa.eu)**

- 704: CIS/Consignment/ConsignmentItem/Commodity/cusCode
- 712: CIS/Consignment/HouseConsignment/ConsignmentItem/Commodity/cusCode
- 714: CIS/Consignment/HouseConsignment/ConsignmentItem/Commodity/cusCode

### **Example**

PIA+12+1234567.8:CV'

## **AEO Mutual Recognition Parties (NEW)**

### **NAD <Group 19> (Optional)**

Additional supply chain actors can be indicated here in order to demonstrate that the entire supply chain was covered by the economic operators holders of the AEO status. If this data class is used Role and Identification number shall be provided, else this data element is optional.

- 704: used
- 712: used
- 714: used

### **Qualifier**

- CS - Consolidator
- FW - Freight Forwarder
- MF - Manufacturer of Goods

### **Reference to XPath in Fxx as published at [circabc.europa.eu](http://circabc.europa.eu)**

- 704: CIS/Consignment/ConsignmentItem/AEOMutualRecognitionParty
- 712: CIS/Consignment/HouseConsignment/ConsignmentItem/AEOMutualRecognitionParty
- 714: CIS/Consignment/HouseConsignment/ConsignmentItem/AEOMutualRecognitionParty

### **Example**

NAD+FW+GB987654312555'

### Related document code (CHANGED)

#### **RFF <Group 35> (Optional)**

Code 825 for T2L(F) is added

### Equipment supplier code (CHANGED)

#### **EQD <Group 36> (Required)**

The equipment supplier code was optional, but is now required

- 704: Required
- 712: Required
- 714: Required

#### **Reference to XPath in Fxx as published at [circabc.europa.eu](http://circabc.europa.eu)**

- 704: CIS/Consignment/TransportEquipment/supplierPartyType
- 712: CIS/Consignment/HouseConsignment/ConsignmentItem/TransportEquipment/supplierPartyType
- 714: CIS/Consignment/HouseConsignment/ConsignmentItem/TransportEquipment/supplierPartyType

#### ***Example***

EQD+CN+OOCU4917909+42G1+2++5'

## Changelog IFTMCS 5.8.9

All the changes required in the IFTMCS to meet the TSD requirements are listed below. These changes have been implemented in the new version 5.8.9.

### Reference version identifier (NEW)

#### **RFF <Group 3> (Required)**

The Transport Document type as reported in ENS. When it is not filled, a default of 704 is assumed

- 704: Required (The ENS Transport Document Type indicating a negotiable consignment)
- 705: Required (The ENS Transport Document Type indicating a non-negotiable (straight) consignment)

### Commodity code (CHANGED)

#### **PIA <Group 18> (Required)**

Now mandatory and minimum length of the HS code is 6

### Communication Contact (NEW)

#### **COM <Group 13> (Required)**

For the Notify Party an email address or telephone number is required when the Notify party is included.

- 3148 – Communication address identifier: Required
- 3155 – Communication address code qualifier: Required
  - EM – Electronic Mail
  - TE – Telephone

## Test scenario's

**Please note! You can request the related example JSON files at [sales@portbase.com](mailto:sales@portbase.com)**

### 1. Minimal message with update

#### **F10 and F11**

Step 1: send minimal message (IE3Fxx) (1.x-nl-F10-minimal.json)

Step 2: process ENS Registration Response (IE3R01)

Step 3: send update on minimal message (IE3Axx)

Step 4: process Amendment Notification (IE3N10)

Step 5: process Assessment Complete Notification (IE3N03)

#### **F12 and F13**

Step 1: send minimal message (IE3Fxx) (1.x-nl-F10-minimal.json)

Step 2: process ENS Registration Response (IE3R01)

Step 3: send update on minimal message (IE3Axx)

Step 4: process Amendment Notification (IE3N10)

Step 5: process ENS Not Complete Notification (IE3N02)

#### **None**

Step 1: send minimal message (1.5-nl-NONE-minimal.json)

Step 2: send update on minimal message (1.5-nl-NONE-minimal-update.json)

### 2. Empty equipment on goods item

#### **F10 and F11**

Step 1: send message with empty equipment on goods item consignment level (IE3Fxx) (2.x-nl-F1x-empty-equipment-on-goodsitem-level.json)

Step 2: process ENS Registration Response (IE3R01)

Step 3: process Assessment Complete Notification (IE3N03)

#### **F12 and F13**

Step 1: send message with empty equipment on goods item consignment level (IE3Fxx) (2.x-nl-F1x-empty-equipment-on-goodsitem-level.json)

Step 2: process ENS Registration Response (IE3R01)

Step 3: process Assessment Complete Notification (IE3N03)

#### **None**

Step 1: send message with empty equipment on goodsitem consignment levels (2.5-nl-NONE-minimal.json)

### 3. Multiple equipment and goods items

#### **F10 and F11**

Step 1: send message with multiple equipments and goods items (IE3Fxx) (3.x-nl-F1x-multiple-equipment-and-goodsitems-level.json)

Step 2: process ENS Registration Response (IE3R01)

Step 3: process Assessment Complete Notification (IE3N03)

### **F12 and F13**

- Step 1: send message with multiple equipments and goods items (IE3Fxx) (3.x-nl-F1x-multiple-equipment-and-goodsitems-level.json)
- Step 2: process ENS Registration Response (IE3R01)
- Step 3: process Assessment Complete Notification (IE3N03)

### **None**

- Step 1: send message with multiple equipments and goods items (3.5-nl-NONE-multiple-equipment-and-goodsitems-level.json)

## **4. Passive border transport means**

### **F10 and F11**

- Step 1: send message with passive means of transport and equipment (IE3Fxx) (4.x-nl-F1x-passive-border-transport-means.json)
- Step 2: process ENS Registration Response (IE3R01)
- Step 3: process Assessment Complete Notification (IE3N03)

## **5. Invalidation**

### **F10, F11, F12, F13**

- Step 1: send minimal message (IE3Fxx) (5.x-nl-F1x-minimal.json)
- Step 2: process ENS Registration Response (IE3R01)
- Step 3: send invalidation (IE3Q04) (4.x-nl-F1x-invalidation.json)
- Step 4: process Invalidation Acceptance Response (IE3R07)

### **None**

- Step 1: send message with multiple equipments and goods items (5.5-nl-NONE-minimal.json)
- Step 2: send invalidation (5.5-nl-NONE-invalidation.json)

## **6. Update than cannot be amended (implicit invalidation)**

### **F10, F11, F12, F13**

- Step 1: send minimal message (IE3Fxx) (6.x-nl-F1x-minimal.json)
- Step 2: process ENS Registration Response (IE3R01)
- Step 3: send message with added goods item (IE3Fxx) (6.n-nl-F1x-minimal-extra-goodsitems.json)
- Step 4: process ENS Registration Response (IE3R01)

## 7. Arrival notification for Dutch ports

*Before starting this scenario, first create a visit with the correct first berth. Put CRN of that visit in the CRN property of the consignments. After sending the consignments set the ATA in the visit of the first berth.*

### **F10, F11, F12, F13**

- Step 1: send minimal message (IE3Fxx) (7.x-nl-F1x-minimal.json)
- Step 2: process ENS Registration Response (IE3R01)
- Step 3: process Assessment Complete Notification (IE3N03)
- Step 4: As admin in the visit screen set the ATA on the first berth
- Step 5: process Arrival Registration Response (IE3R04)

## 8. Message with all input fields

### **F10, F11, F12, F13**

- Step 1: send maximal message (IE3Fxx) (8.x-nl-F1x-minimal.json)
- Step 2: process ENS Registration Response (IE3R01)
- Step 3: process Assessment Complete Notification (IE3N03)

## 9. Control notification

### **F10, F11, F12, F13**

- Step 1: send minimal message (IE3Fxx) (9.x-nl-F1x-minimal.json)
- Step 2: process ENS Registration Response (IE3R01)
- Step 3: process Control Notification (IE3N08)

## 10. Consignment without consignee

### **F10, F11, F12, F13**

- Step 1: send message without consignee (IE3Fxx) (10.x-nl-F1x-minimal.json)
- Step 2: process ENS Registration Response (IE3R01)
- Step 3: process Assessment Complete Notification (IE3N03)

## 11. Advance control notification

### **F10, F11, F12, F13**

- Step 1: send minimal message (IE3Fxx) (11.x-nl-F1x-minimal.json)
- Step 2: process ENS Registration Response (IE3R01)
- Step 3: process Advance Control Notification (IE3N09)

## 12. Do not load

### **F10, F11, F12, F13**

- Step 1: send minimal message (IE3Fxx) (12.x-nl-F1x-minimal.json)
- Step 2: process ENS Registration Response (IE3R01)
- Step 3: process Do Not Load (IE3Q01)

## 13. Invalid message

### **F10, F11, F12, F13**

- Step 1: send minimal message (IE3Fxx) (13.x-nl-F1x-minimal.json)
- Step 2: process error message (IE3N99)

## 14. Consignment discharged outside Netherlands (for international users)

### **F10, F11, F12, F13**

Step 1: send minimal message (IE3Fxx) (14.x-nl-F1x-discharge-de.json)

Step 2: process ENS Registration Response (IE3R01)

Step 3: process Assessment Complete Notification (IE3N03)

## 15. Single filing IFTMCS remove one house consignment from consignment

### **F11**

*First a master level consignment (704) is sent that indicates that it should contain 2 house consignments. Then 2 house level consignments are sent (714). As soon as the consignment is complete, it will be sent to STI and a registered message will be received.*

Step 1: send IFTMCS message master level (704) (15.1-F11-IFTMCS-704-2-house.txt)

Step 2: send IFTMCS message house level A (714) (15.1-F11-IFTMCS-714-a.txt)

Step 3: send IFTMCS message house level B (714) (15.1-F11-IFTMCS-714-b.txt)

Step 4: process ENS Registration Response (IE3R01)

*A new master level consignment is sent that indicates that it should contain only 1 house consignment. Then a cancel of one of the house consignments is sent. As soon as the consignment is considered complete (1 house consignment is expected and 1 house consignment is provided), it will be sent to STI and a registered message will be received*

Step 5: send IFTMCS message master level (704) (15.1-F11-IFTMCS-704-1-house.txt)

Step 6: send IFTMCS message cancel house level B (714) (15.1-F11-IFTMCS-714-b-cancel.txt)

Step 4: process ENS Registration Response (IE3R01)

## Complete example IFTMCS 6.0.5

### Master B/L

UNA:+.?'  
UNB+UNOC:3+RTMCUS+NLRTMPCS+240806:2016+0001++IFTMCS'  
UNH+24080620160001+IFTMCS:D:00B:UN:PBS30'  
BGM+704+MEDUVB897050/653831+9'  
TSD+30+0'  
CUX+2:USD+3:EUR+0.94635'  
FTX+ACD+F11'  
CNT+7:13726.000:KGM'  
CNT+10:2'  
LOC+25+PK'  
LOC+25+NL'  
LOC+7+:::NLWOR'  
TOD++XH'  
RFF+MB:MEDUVB897050'  
RFF+MRN:24NL117C2D4B4D7058'  
RFF+UCN:REF-1234001'  
RFF+ANJ:LICENSE-ID'  
GOR+++:::N27+:::27'  
TDT+20+019W+1++COSU:::COSCO SHIPPING LINES+++9450404:::SOFIA EXPRESS:LR'  
LOC+11+NLRTM+4810'  
DTM+132:20240813:102'  
LOC+9+PKKHI'  
DTM+186:20240706:102'  
LOC+82+PKKHI'  
RFF+ATZ:NLRTM24903433'  
RFF+VM:5LQE3'  
NAD+MS+NL24137366+CROSS-OCEAN, ROTTERDAM'  
CTA+IC+:COSCON'  
COM+CONTACT@COSCON.COM:EM'  
NAD+CG+NL24137366+CROSS-OCEAN, ROTTERDAM'  
NAD+CZ+++INTERGLOBE LOGISTICS+OFFICE NO.710,7TH FLOOR,CAESARS TOW+KARACHI++99999+PK'  
NAD+CN+++GLOBAL FORWARDING LIMITED+UNIT B, CROSSPOINT BUSINESS PARK,,S+HAYES++UB3 1DQ+GB'  
NAD+N1+++GLOBAL FORWARDING LIMITED+UNIT B, CROSSPOINT BUSINESS PARK,,S+HAYES++UB3 1DQ+GB'  
NAD+WH+NL4444444'  
GID+1+1950:CT'  
PIA+5+940360:HS'  
FTX+AAA+++Wooden furniture'  
MEA+AAE+G+KGM:13726.100'  
PCI++1-1950'  
SGP+MSMU4163677+1950'  
RFF+ACE:POUS1234:825'  
EQD+CN+MSMU4163677+4510+2++5'  
MEA+AAE+T+KGM:4000'  
SEL+26393001+AB'  
TPL+SEA'  
RFF+BN:BOOKING 1234'  
NAD+CR++APM TERMINALS MAASVLAKTE II B.V.:Europaweg 9103199 LC Rotterdam:NA:Rotterdam:410RT2046773'  
UNT+31+24080620160001'  
UNZ+1+0001'

## House B/L

UNA:+.?'  
UNB+UNOC:3+RTMCUS+NLRTMPCS+240806:2016+0001++IFTMCS'  
UNH+24080620160001+IFTMCS:D:00B:UN:PBS30'  
BGM+714+MEDUVB897050/653831+9'  
FTX+ACD+F11'  
CNT+7:13726.000:KGM'  
LOC+25+PK'  
LOC+25+NL'  
LOC+7+:::DEHAM'  
TOD++XH'  
RFF+MB:MEDUVB897050'  
RFF+BH:MEDUVB897050-H1'  
RFF+MRN:24NL117C2D4B4D7058'  
RFF+UCN:MARCEL-001'  
RFF+ANJ:LICENSE-ID'  
TDT+20+019W+1++COSU:::COSCO SHIPPING LINES+++9450404:::SOFIA EXPRESS:LR'  
LOC+11+NLRTM+4810'  
DTM+132:20240813:102'  
LOC+9+PKKHI'  
DTM+186:20240706:102'  
LOC+82+PKKHI'  
RFF+ATZ:NLRTM24903433'  
RFF+VM:5LQE3'  
NAD+MS+NL24137366+CROSS-OCEAN, ROTTERDAM'  
CTA+IC+:COSCON'  
COM+CONTACT@COSCON.COM:EM'  
NAD+CG+NL24137366+CROSS-OCEAN, ROTTERDAM'  
NAD+CZ+++INTERGLOBE LOGISTICS+OFFICE NO.710,7TH FLOOR,CAESARS TOW+KARACHI++99999+PK'  
NAD+CN+++GLOBAL FORWARDING LIMITED+UNIT B, CROSSPOINT BUSINESS PARK,,S+HAYES++UB3 1DQ+GB'  
NAD+N1+++GLOBAL FORWARDING LIMITED+UNIT B, CROSSPOINT BUSINESS PARK,,S+HAYES++UB3 1DQ+GB'  
NAD+BY+NL4444444++Design Shop+BY BORGUNDFJORDVEGEN 118,POSTBOKS 8115+Woerden++6017+NL'  
NAD+SE+NL5555555++IKEA+SE BORGUNDFJORDVEGEN 118,POSTBOKS 8115+STOCKHOLM++6017+SW'  
GID+1+1950:CT'  
PIA+5+94036030:HS'  
FTX+AAA+++Wooden furniture of a kind used in shops'  
MEA+AAE+G+KGM:13726.100'  
PCI++1-800'  
SGP+MSMU4163677+800'  
GID+1+800:CT'  
PIA+5+94036010:HS'  
FTX+AAA+++Wooden furniture of a kind used in the dining room and the living room'  
MEA+AAE+G+KGM:13726.100'  
PCI++1-800'  
SGP+MSMU4163677+800'  
EQD+CN+MSMU4163677+4510+2++5'  
MEA+AAE+T+KGM:4000'  
SEL+26393001+AB'  
TPL+SEA'  
UNT+31+24080620160001'  
UNZ+1+0001'

## Complete example IFTMCS 5.8.9

UNA:+.?'  
UNB+UNOC:3+005361771.00+NLRTPMPCS+250204:1352+250000749++IFTMCS'  
UNH+TEST250032342+IFTMCS:D:00B:UN:PBS20'  
BGM+707+TEST250032342+9'  
CUX+2:USD+3:EUR+0.99085'  
CNT+7:27200:KGM'  
RFF+BM:MSDUSA524554'  
RFF+MRN:25NL01000JVAXCCAT6::704'  
TDT+20+NA452R+1++TEST:::Med. Shipp. Comp.+++9605231:::MSC DAKAR X'  
LOC+11+NLRTM:::ROTTERDAM+19387513:::ECT DELTA EUROHAVEN DDN'  
DTM+132:20250210:102'  
LOC+9+BRSSA:::SALVADOR'  
DTM+186:20250210:102'  
RFF+ATZ:NLRTM25900227'  
RFF+VM:CQ2075'  
NAD+MS+NL24237526++MSC NL+Westblaak 216-218+Rotterdam++3012 KP+NL'  
CTA+IC+:Sylvana Baggerman-Wijnbelt'  
COM+sylvana.baggerman-wijnbelt@msc.com:EM'  
NAD+CG+NL24237526++MSC NL+Westblaak 216-218+Rotterdam++3012 KP+NL'  
NAD+CZ+++MPG LOGISTICS BRASIL LTDA+AV ANA COSTA, 61 / TERREO EV 943 -+Santos++11060001+BR'  
NAD+CN+NL853925525++EASYFRESH NEDERLAND BV+IABC 5257+Breda++4814 RD+NL'  
NAD+N1+NL853925525++EASYFRESH NEDERLAND BV+IABC 5257+Breda++4814 RD+NL'  
COM+jan.test1@test.com:EM'  
NAD+N2+NL853925123++EASYFRESH NEDERLAND BV+IABC 5257+Breda++4814 RD+NL'  
COM+jan.test2@test.com:EM'GID+1+5440:BX'  
TMP+2+7:CEL'  
RNG+12+CEL:7:7'  
PIA+5+080501:HS'  
FTX+AAA+++01X40 FCL/FCL REEFER CONTAINER CONTAINING; 5440 BOXES WITH FRESH TAHITI LEMON IN  
NATURA TEMPERATURE; 7C VENTILATION; 25 CBM/H HUMIDITY; 85% NET WEIGHT; 24.480,00KG INVOICE;  
002/2025 DUE; 25BR000120771-5 RUC; 5BR5530747720012025 LPCO; E2500037675 NCM; 0805'  
MEA+AAE+G+KGM:27200'  
PCI++UNIAO FRUTAS'  
SGP+TRLU1892315+5440'  
EQD+CN+TRLU1892315+4532+2++5'  
MEA+AAE+T+KGM:4725'  
SEL+020307+AB'  
NAD+CR++NA:NA:NA:NA:519RTSP79698'  
UNT+33+TEST250032342'  
UNZ+1+250000749'